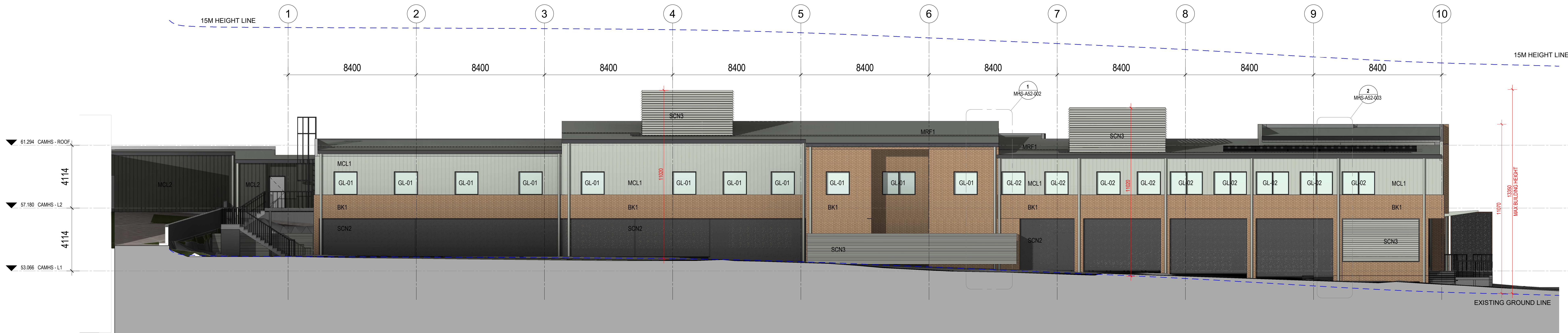


1 NORTH ELEVATION  
SCALE: 1:100



2 SOUTH ELEVATION  
SCALE: 1:100

## MATERIALS LEGEND

- GL-01** TWO LAYER GLAZING WINDOWS WITH INTEGRAL VENETIAN BLINDS IN POWDERCOATED ALUMINUM FRAME  
WINDOW SIZES AS DRAWN , EXTERNAL FIXED DOUBLE GLAZED IN LOW-E COATING. INTERNAL GLAZING TO BE VIRIDIAN ASSAULT GUARD ULTRA 14.28mm, ALLOW FOR JOCKEY SASH FRAMES WITH TAMPER PROOF COMPONENTS AND ANTI-LIGATURE BLIND CONTROL KNOB. SUBMIT WINDOW SHOP DRAWINGS FOR REVIEW BY ARCHITECT.
- GL-02** VISION PANEL  
WINDOW SIZES AS DRAWN , FIXED DOUBLE GLAZED IN LOW-E COATING. SUBMIT WINDOW SHOP DRAWINGS FOR REVIEW BY ARCHITECT.
- GL-03** SECURE COURTYARD SCREEN  
VIRIDIAN ASSAULT GUARD ULTRA 14.28mm  
LAID OUT IN HORIZONTAL PANELS, PATTERN AS DRAWN; FIXED TO STRUCTURAL FRAME (OUTSIDE THE COURTYARD) AND ST LUCIA SUITE FRAME TO THE INTERNAL SIDE OF THE COURTYARD WITH TAMPER PROOF, ANTI-LIGATURE FIXINGS, FRAMING TO BE POWDERCOATED IN COLOUR MONUMENT

- SCN1** SECURE COURTYARD SCREEN  
CUSTOM PERFORATED POWDERCOATED METAL SHEET  
LAID OUT IN HORIZONTAL PANELS, PANEL SIZE AND PATTERN AS DRAWN; FIXED TO STRUCTURAL FRAME (OUTSIDE THE COURTYARD) AND ST LUCIA SUITE FRAME TO THE INTERNAL SIDE OF THE COURTYARD WITH TAMPER PROOF, ANTI-LIGATURE FIXINGS; FRAMING AND METAL SHEET PANEL TO BE POWDERCOATED IN COLOUR MONUMENT
- SCN2** SECURE UNDERCROFT SCREEN  
LOCKER GROUP 'CHAMPAGNE' PERFORATED POWDERCOATED METAL SHEET  
LAID OUT HORIZONTALLY; STANDARD PANEL SIZE 2440mm X 1220mm; FACE FIXED TO GALVANISED STRUCTURAL FRAME; FRAMING AND METAL SHEET PANEL TO BE POWDERCOATED IN COLOUR MONUMENT
- SCN3** SECURE PLANT AREA SCREEN  
LOUVRE GRILLE  
LAID OUT HORIZONTAL PATTERN; PANEL SIZE MAX. 6m LONG AT 800mm SPACING; FACE FIXED TO GALVANISED STRUCTURAL FRAME WITH MITRED JOINT ON CORNERS

- MRF1** METAL DECK ROOF IN LYSAUGHT LONGLINE 305 HIGH STRENGTH PROFILE IN COLOUR SHALE GREY  
RAINWATER GOODS FINISH IN COLORBOND MONUMENT – 200/250mm HALF ROUND GUTTER AND 150mm DIA. DOWNPIPES  
ALL SOFFITS & EAVES LINED IN CSR CEMINTEL SURROUND FAÇADE PANEL IN COLOUR WHITEISH BASE
- CLD1** CEMINTEL SURROUND : COLOUR - WHITEISH BASE
- CLD2** CEMINTEL SURROUND : COLOUR - SHALE GREY
- CLD3** VITRAPANEL - COMPRESSED FIBRE CEMENT CLADDING WITH WALL GRAPHIC APPLICATION TO SURFACE

- MCL1** METAL WALL CLADDING IN LYSAUGHT LONGLINE 305 HIGH STRENGTH PROFILE IN COLOUR SHALE GREY
- MCL2** METAL WALL CLADDING IN LYSAUGHT LONGLINE 305 HIGH STRENGTH PROFILE IN COLOUR MONUMENT
- BK1** BRICK WALL VENEER : AUSTRAL SYMMETRY ASPHALT
- BLK2R** 190mm REINFORCED CORE FILLED BLOCKWORK WITH RENDERED GREY OXIDE FINISH

KEY PLAN

REV	DESCRIPTION	DATE
A	ISSUED FOR DESIGN DEVELOPMENT	14/05/2022
B	ISSUE FOR TENDER	07/07/2022

1

MHS-A52-001

1

MHS-A52-004

1

MHS-A52-002

2

MHS-A52-003

1

MHS-A52-005

1

MHS-A52-006

1

MHS-A52-007

1

MHS-A52-008

1

MHS-A52-009

1

MHS-A52-010

1

MHS-A52-011

1

MHS-A52-012

1

MHS-A52-013

1

MHS-A52-014

1

MHS-A52-015

1

MHS-A52-016

1

MHS-A52-017

1

MHS-A52-018

1

MHS-A52-019

1

MHS-A52-020

1

MHS-A52-021

1

MHS-A52-022

1

MHS-A52-023

1

MHS-A52-024

1

MHS-A52-025

1

MHS-A52-026

1

MHS-A52-027

1

MHS-A52-028

1

MHS-A52-029

1

MHS-A52-030

1

MHS-A52-031

1

MHS-A52-032

1

MHS-A52-033

1

MHS-A52-034

1

MHS-A52-035

1

MHS-A52-036

1

MHS-A52-037

1

MHS-A52-038

1

MHS-A52-039

1

MHS-A52-040

1

MHS-A52-041

1

MHS-A52-042

1

MHS-A52-043

1

MHS-A52-044

1

MHS-A52-045

1

MHS-A52-046

1

MHS-A52-047

1

MHS-A52-048

1

MHS-A52-049

1

MHS-A52-050

1

MHS-A52-051

1

MHS-A52-052

1

MHS-A52-053

1

MHS-A52-054

1

MHS-A52-055

1

MHS-A52-056

1

MHS-A52-057

1

MHS-A52-058

1

MHS-A52-059

1

MHS-A52-060

1

MHS-A52-061

1

MHS-A52-062

1

MHS-A52-063

1

MHS-A52-064

1

MHS-A52-065

1

MHS-A52-066

1

MHS-A52-067

1

MHS-A52-068

1

MHS-A52-069

1

MHS-A52-070

1

MHS-A52-071

1

MHS-A52-072

1

MHS-A52-073

1

MHS-A52-074

1

MHS-A52-075

1

MHS-A52-076

1

MHS-A52-077

1

MHS-A52-078

1

MHS-A52-079

1

MHS-A52-080

1

MHS-A52-081

1

MHS-A52-082

1

MHS-A52-083

1

MHS-A52-084

1

MHS-A52-085

1

MHS-A52-086

1

MHS-A52-087

1

MHS-A52-088

1

MHS-A52-089

1

MHS-A52-090

1

MHS-A52-091

1

MHS-A52-092

1

MHS-A52-093

1

MHS-A52-094

1

MHS-A52-095

1

MHS-A52-096

1

MHS-A52-097

1

MHS-A52-098

1

MHS-A52-099

1

MHS-A52-100

1

MHS-A52-101

1

MHS-A52-102

1

MHS-A52-103

1

MHS-A52-104

1

MHS-A52-105

1

MHS-A52-106

1

MHS-A52-107

1

MHS-A52-108

1

MHS-A52-109

1

MHS-A52-110

1

MHS-A52-111

1

MHS-A52-112

1

MHS-A52-113

1

MHS-A52-114

1

MHS-A52-115

1

MHS-A52-116

1

MHS-A52-117

1

MHS-A52-118

1

MHS-A52-119

1

MHS-A52-120

1

MHS-A52-121

1

MHS-A52-122

1

MHS-A52-123

1

MHS-A52-124

1

MHS-A52-125

1

MHS-A52-126

1

MHS-A52-127

1

MHS-A52-128

1

MHS-A52-129

1

MHS-A52-130

1

MHS-A52-131

1

MHS-A52-132

1

MHS-A52-133

1

MHS-A52-134

1

MHS-A52-135

1

MHS-A52-136

1

MHS-A52-137

1

MHS-A52-138

1

MHS-A52-139

1

MHS-A52-140

1

MHS-A52-141

1

MHS-A52-142

1

MHS-A52-143

1

MHS-A52-144

1

MHS-A52-145

1

MHS-A52-146

1

MHS-A52-147

1

MHS-A52-148

1

MHS-A52-149

1

MHS-A52-150

1

MHS-A52-151

1

MHS-A52-152

1

MHS-A52-153

1

MHS-A52-154

1

MHS-A52-155

1

MHS-A52-156

1

MHS-A52-157

1

MHS-A52-158

1

MHS-A52-159

1

MHS-A52-160

1

MHS-A52-161

1

MHS-A52-162

1

MHS-A52-163

1

MHS-A52-164

1

MHS-A52-165

1

MHS-A52-166

1

MHS-A52-167

1

MHS-A52-168

1

MHS-A52-169

1

MHS-A52-170

1

MHS-A52-171

1

MHS-A52-172

1

MHS-A52-173

1

MHS-A52-174

1

MHS-A52-175

1

MHS-A52-176

1

MHS-A52-177

1

MHS-A52-178

1

MHS-A52-179

1

MHS-A52-180

1

MHS-A52-181

1

MHS-A52-182

1

MHS-A52-183

1

MHS-A52-184

1

MHS-A52-185

1

MHS-A52-186

1

MHS-A52-187

1

MHS-A52-188

1

MHS-A52-189

1

MHS-A52-190

1

MHS-A52-191

1

MHS-A52-192

1

MHS-A52-193

1

MHS-A52-194

1

MHS-A52-195

1

MHS-A52-196

1

MHS-A52-197

1

MHS-A52-198

1

MHS-A52-199

1

MHS-A52-200

1

MHS-A52-201

1

MHS-A52-202

1

MHS-A52-203

1

MHS-A52-204

1

MHS-A52-205

1

MHS-A52-206

1

MHS-A52-207

1

MHS-A52-208

1

MHS-A52-209

1

MHS-A52-210

1

MHS-A52-211

1

MHS-A52-212

1

MHS-A52-213

1

MHS-A52-214

1

MHS-A52-215

1

MHS-A52-216

1

MHS-A52-217

1

MHS-A52-218

1

MHS-A52-219

1

MHS-A52-220

1

MHS-A52-221

1

MHS-A52-222

1

MHS-A52-223

1

MHS-A52-224

1

MHS-A52-225

1

MHS-A52-226

1

MHS-A52-227

1

MHS-A52-228

1

MHS-A52-229

1

MHS-A52-230

1

MHS-A52-231

1

MHS-A52-232

1

MHS-A52-233

1

MHS-A52-234

1

MHS-A52-235

1

MHS-A52-236

1

MHS-A52-237

1

MHS-A52-238

1

MHS-A52-239

1

MHS-A52-240

1

MHS-A52-241

1

MHS-A52-242

1

MHS-A52-243

1

MHS-A52-244

1

MHS-A52-245

1

MHS-A52-246

1

MHS-A52-247

1

MHS-A52-248

1

MHS-A52-249

1

MHS-A52-250

1

MHS-A52-251

1

MHS-A52-252

1

MHS-A52-253

1

MHS-A52-254

1

MHS-A52-255

1

MHS-A52-256

1

MHS-A52-257

1

MHS-A52-258

1

MHS-A52-259

1

MHS-A52-260

1

MHS-A52-261

1

MHS-A52-262

1

MHS-A52-263

1

MHS-A52-264

1

MHS-A52-265

1

MHS-A52-266

1

MHS-A52-267

1

MHS-A52-268

1

MHS-A52-269

1

MHS-A52-270

1

MHS-A52-271

1

MHS-A52-272

1

MHS-A52-273

1

MHS-A52-274

1

MHS-A52-275

1

MHS-A52-276

1

MHS-A52-277

1

MHS-A52-278

1

MHS-A52-279

1

MHS-A52-280

1

MHS-A52-281

1

MHS-A52-282

1

MHS-A52-283

1

MHS-A52-284

1

MHS-A52-285

1

MHS-A52-286

1

MHS-A52-287

1

MHS-A52-288

1

MHS-A52-289

1

MHS-A52-290

1

MHS-A52-291

1

MHS-A52-292

1

MHS-A52-293

1

MHS-A52-294

1

MHS-A52-295

1

MHS-A52-296

1

MHS-A52-297

1

MHS-A52-298

1

MHS-A52-299

1

MHS-A52-300

1

MHS-A52-301

1

MHS-A52-302

1

MHS-A52-303

1

MHS-A52-304

1

MHS-A52-305

1

MHS-A52-306

1

MHS-A52-307

1

MHS-A52-308

1

MHS-A52-309

1

MHS-A52-310

1

MHS-A52-311

1

MHS-A52-312

1

MHS-A52-313

1

MHS-A52-314

1

MHS-A52-315

1

MHS-A52-316

1

MHS-A52-317

1

MHS-A52-318

1

MHS-A52-319

1

MHS-A52-320

1

MHS-A52-321

1

MHS-A52-322

1

MHS-A52-323

1

MHS-A52-324

1

MHS-A52-325

1

MHS-A52-326

1

MHS-A52-327

1

MHS-A52-328

1

MHS-A52-329

1

MHS-A52-330

1

MHS-A52-331

1

MHS-A52-332

1

MHS-A52-333

1

MHS-A52-334

1

MHS-A52-335

1

MHS-A52-336

1

MHS-A52-337

1

MHS-A52-338

1

MHS-A52-339

1

MHS-A52-340

1

MHS-A52-341

1

MHS-A52-342

1

MHS-A52-343

1

MHS-A52-344

1

MHS-A52-345

1

MHS-A52-346

1

MHS-A52-347

1

MHS-A52-348

1

MHS-A52-349

1

MHS-A52-350

1

MHS-A52-351

1

MHS-A52-352

1

MHS-A52-353

1

MHS-A52-354

1

MHS-A52-355

1

MHS-A52-356

1

MHS-A52-357

1

MHS-A52-358

1

MHS-A52-359

1

MHS-A52-360

1

MHS-A52-361

1

MHS-A52-362

1

MHS-A52-363

1

MHS-A52-364

1

MHS-A52-365

1

MHS-A52-366

1

MHS-A52-367

1

MHS-A52-368

1

MHS-A52-369

1

MHS-A52-370

1

MHS-A52-371

1

MHS-A52-372

1

MHS-A52-373

1

MHS-A52-374

1

MHS-A52-375

1

MHS-A52-376

1

MHS-A52-377

1

MHS-A52-378

1

MHS-A52-379

1

MHS-A52-380

1

MHS-A52-381

1

MHS-A52-382

1

MHS-A52-383

1

MHS-A52-384

1

MHS-A52-385

1

MHS-A52-386

1

MHS-A52-387

1

MHS-A52-388

1

MHS-A52-389

1

MHS-A52-390

1

MHS-A52-391

1

MHS-A52-392

1

MHS-A52-393

1

MHS-A52-394

1

MHS-A52-395

1

MHS-A52-396

1

MHS-A52-397

1

MHS-A52-398

1

MHS-A52-399

1

MHS-A52-400

1

MHS-A52-401

1

MHS-A52-402

1

MHS-A52-403

1

MHS-A52-404

1

MHS-A52-405

1

MHS-A52-406

1

MHS-A52-407

1

MHS-A52-408

1

MHS-A52-409

1

MHS-A52-410

1

MHS-A52-411

1

MHS-A52-412

1

MHS-A52-413

1

MHS-A52-414

1

MHS-A52-415

1

MHS-A52-416

1

MHS-A52-417

1

MHS-A52-418

1

MHS-A52-419

1

MHS-A52-420

1

MHS-A52-421

1

MHS-A52-422

1

MHS-A52-423

1

MHS-A52-424

1

MHS-A52-425

1

MHS-A52-426

1

MHS-A52-427

</